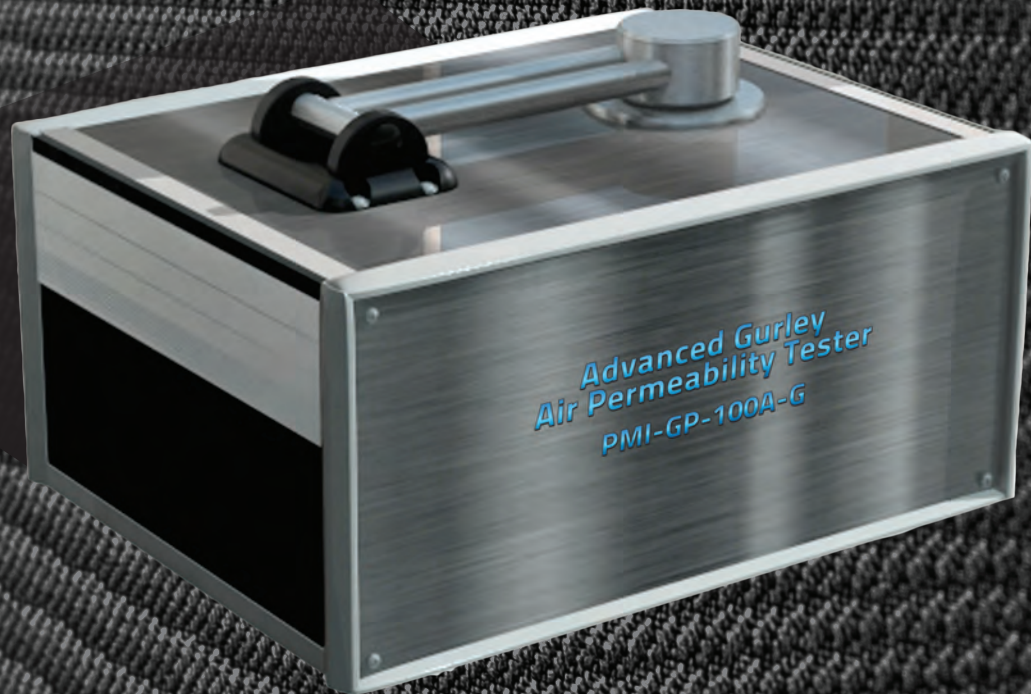


# THE PMI ADVANCED GURLEY PERMEABILITY TESTER

## PMI-GP-100A-G

The PMI fully automatic Gurley Permeability Tester is for measuring air permeability according to standards ISO 5636-3 and 5, TAPPI-T460 with digital display and pneumatic clamping.



Not just products...*solutions!*

## Description

The PMI Advanced Gurley Permeability Tester provides fast and accurate measurement of gas permeability of solid, cylindrical and sheet samples. Featuring nondestructive testing and fast results, our tester is perfect for both R&D and quality control.

## Applications

Industries worldwide utilize our permeability testers for R&D and quality control. Applicable industries include: Automotive, Battery, Biotechnology Separator, Ceramic, Filtration, Fuel Cells, Geotextiles, Nonwovens, Paper, and Textiles.

## Principle

The Advanced Gurley Permeability Tester is used to determine the permeability of porous solids. A gas such as air is forced to flow through the test sample. Measurements of the steady-state flow rate and the corresponding pressure drops provide the necessary data for calculation of the Permeability using darcy and other units.

## Optional Features

- Permeability measurement of high flow rate samples
- Permeability of samples under compressive stress
- Use of elevated test temperatures and a wide variety of gases

## Features

- Fully automatic
- Windows-based software handles all control, measurement, data collection, and report generation; complete manual control also possible
- Comes with computer equipt with real-time graphical test display depicts testing status and results throughout operation
- Non-destructive testing
- Length of test approximately 1 minute
- Wide range of acceptable sample types and sizes
- Multiple sample chambers available
- Minimal maintenance required
- Units in Gurley
- Completely automated air permeability tester
- Pneumatic Clamping

*Includes: PC, Cords, Compressor, Gurley Apparatus, Sealing Fluid, Timer and User Manual*

# Specifications\*

- Air Permeance Range: 0.35µm/(Pa·s) and 15µm/(Pa·s) and 0.1 µm/(Pa·s) and 100 µm/(Pa·s)
- Sample Size: 100mm x 100mm
- Pneumatic Clamping: (180±30)N
- Pressure Range: Up to (127 ± 0.02)kPa
- Pressurizing Gas: Clean, dry or compressed air (Or any other nonflammable and noncorrosive gas)
- Pressure Transducer Range: 0 – 150 kPa
- Reservoir Volume: 10 litres
- Pressure controller: 1.47 ± 0.02 kPa
- Accuracy: 0.15% of reading
- Mass Flow Transducer Range (3 options):  
 5-150 ± 2 ml/min      50-500 ± 5 ml/min      300-3000 ± 20 ml/min
- Power Requirements: 220-230V, 50Hz

\* Other specifications for this machine are available. Specifications are subject to change without notice.

## PMI Software

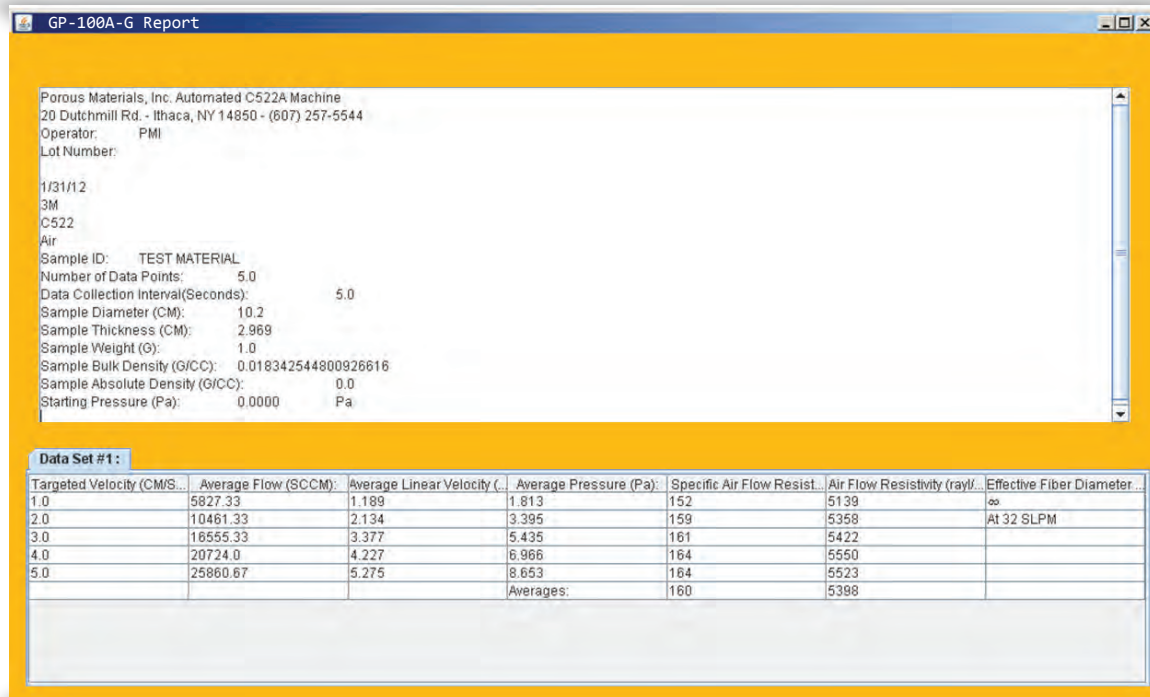


Figure 1  
PMI Software Report Screenshot

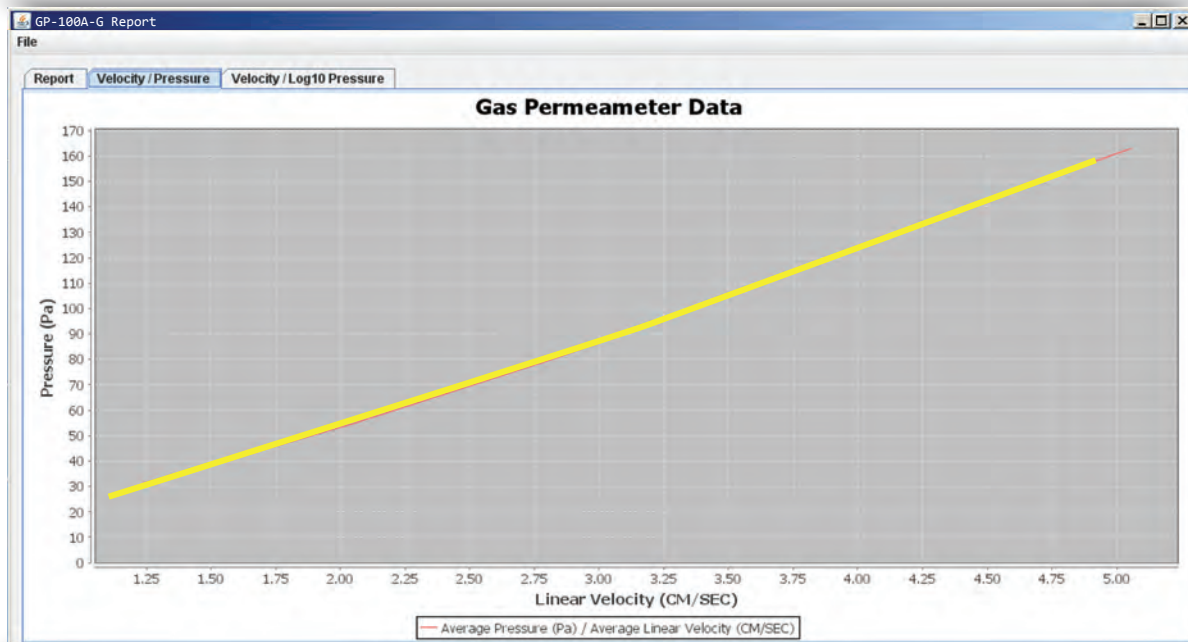


Figure 2  
PMI Software Report Graph Screenshot

## Sales & Services

Our sales team is dedicated to helping our customers find which machine is right for their situation. We also offer custom machines for customers with unique needs. To find out what we can do for you, contact us.

We are committed to customer support including specific service products, short response times & customer specific solutions. To quickly & flexibly meet our customer's requirement, we offer a comprehensive range of services.



*Customize your machine today!*



20 Dutch Mill Rd, Ithaca, NY 14850, USA  
Toll Free (US & Canada): 1-800-TALK-PMI (1-800-825-5764)  
Phone: 607-257-5544 Fax: 607-257-5639

Email: [info@pmiapp.com](mailto:info@pmiapp.com) [www.pmiapp.com](http://www.pmiapp.com)

The most advanced, accurate, easy to use  
and reproducible porometers in the world.



20 Dutch Mill Rd, Ithaca, NY 14850, USA  
Toll Free (US & Canada): 1-800-TALK-PMI (1-800-825-5764)  
Phone: 607-257-5544 Fax: 607-257-5639

Email: [info@pmiapp.com](mailto:info@pmiapp.com)

[www.pmiapp.com](http://www.pmiapp.com)